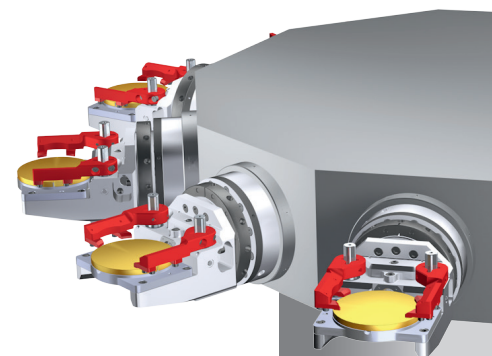
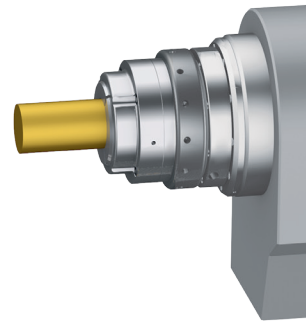
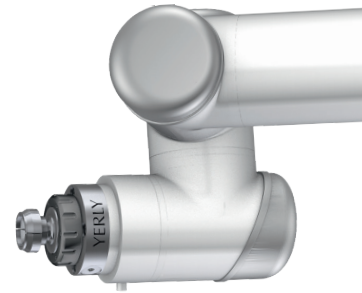


The adaptable clamping and palletizing system for an intelligent and flexible production



32



60



100



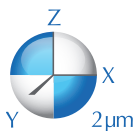
140

Specially designed for:

- Precision mechanics
- Watch industry
- Medical technology
- Aeronautical industry
- Robotics
- Measuring technology

Our system provides:

- A positioning accuracy of $2\mu\text{m}$
- Flexibility in the clamping principle: chuck, collet, (contour-) hold-down, vise, etc.
- A uniform system for all machine types
- Optimized clamping due to clamping range limitation
- A rod culvert



Overview of the AXXEN clamping system

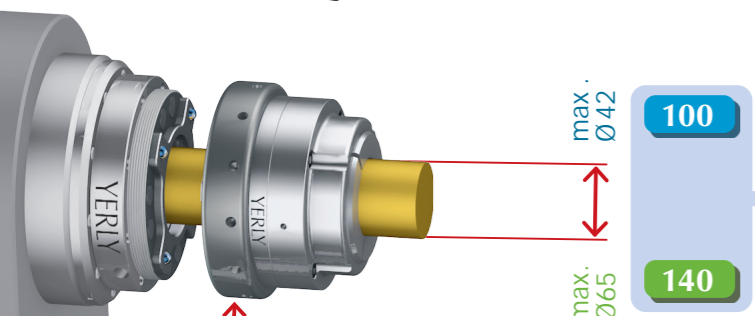
Measuring station with pallet support:
For workpieces and tools.



- 32
- 60
- 100
- 140

4 sizes

- 32
- 60
- 100
- 140

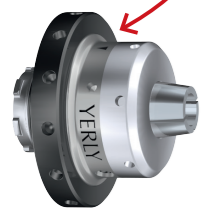


- 100
- 140

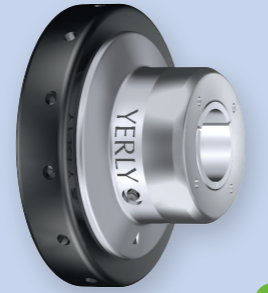
Main spindle
With a rod culvert
up to $\varnothing 65$ mm.

2 min

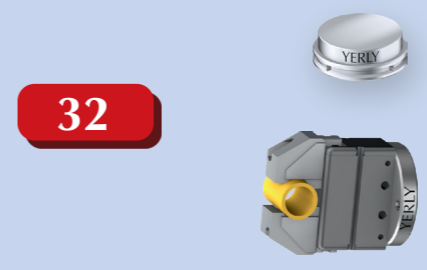
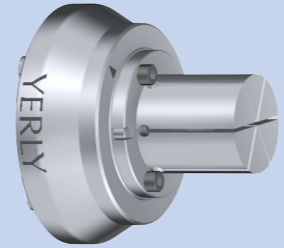
Quick coupling
For a clamping system
change within 2 minutes.



- 32
- 60
- 100
- 140



140



32

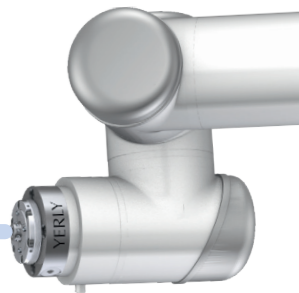
60



100

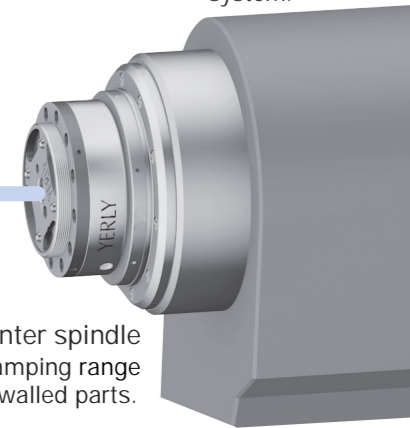


- 32
- 60
- 100



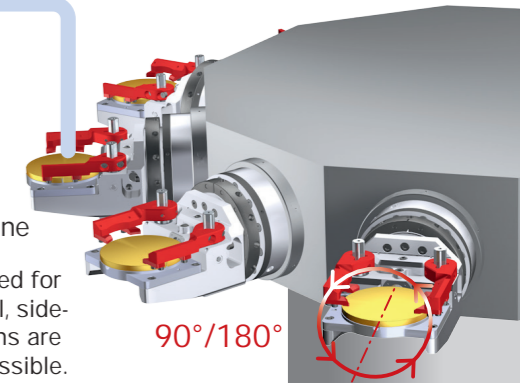
Robot
Depending on the application,
the 4 press air ducts of the
clamping system are used for the
pneumatic control of the gripping
system.

- 32
- 60
- 100
- 140



Main or counter spindle
With adjustable clamping range
imitation for thin-walled parts.

- 32
- 60
- 100
- 140



Horizontal rotary indexing machine
This top-bottom hold-down is intended for
front and back machining on blanks; small, side-
opposite machining operations are
also possible.

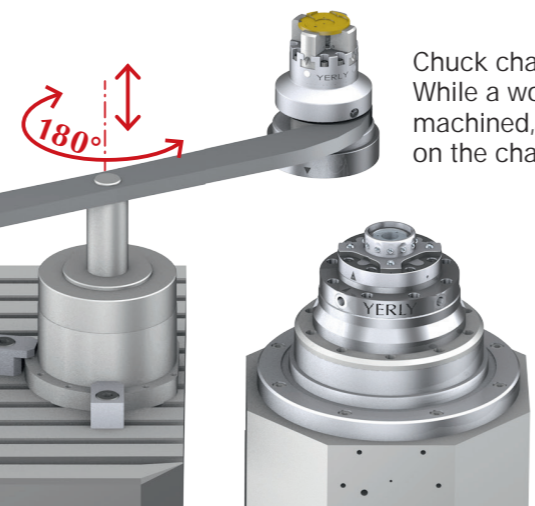
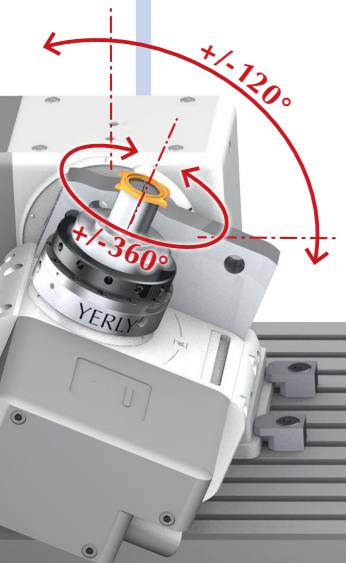
- 32
- 60
- 100
- 140

- 32
- 60
- 100
- 140

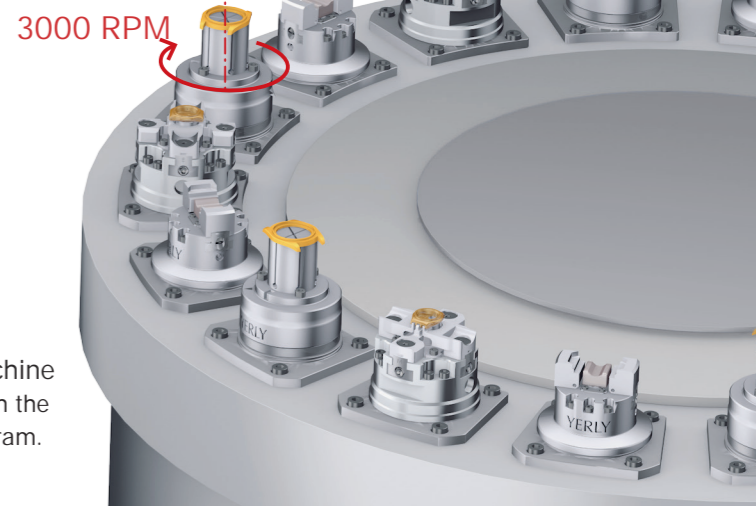
- 32
- 60
- 100
- 140

Swivel rotary table
We supply clamping elements with built-
in clamping range limitation.

Clamping elements for machine
tables
Our technical office also develops
optimized, user-specific solutions.



Chuck change with rotary arm
While a workpiece is being
machined, a new blank is clamped
on the change chuck.



Vertical rotary transfer machine
We equip such machines with the
complete Axxen program.

Clamping solutions for the watch industry, precision mechanics, medical technology, etc.

32 Base 32P/M

60 Base 60M / Base 60P

M = manual
P = pneumatic

4-channels Compressed air supply via 4-channels. With the AXXEN clamping system the 4 support-feet also serve as compressed air supply for various chuck functions such as:

- Cleaning
- Clamping the workpiece
- Releasing the workpiece
- Holding down

Cleaning of the P reference surfaces. Realized with an air nozzle, which guarantees highest precision in all cases.

100 Base 100M / Base 100P

Z 2µm The AXXEN zero point clamping principle. When clamping on the base 4 carbide balls position the chuck in the X and Z reference position. The support feet secure the Y position with 2µm accuracy.

For ceramic and sapphire machining. When machining ceramics, very fine dust accumulates, which can block the threads. To solve this problem, we developed a clamping device with bayonet locks.

Bayonet lock / Standard lock

Manual screw lock The chuck can only be tightened in one position with the threaded ring on the base. The screw lock is always open on the inside for the pull rod to pass through. Option: Vacuum through the centre.

140 Base of the quick clamping system 100M / Base 140M / Base 140P

8-channels Compressed air supply via 8-channels. On this AXXEN clamping system, the support-feet also serve as compressed air supply for various chuck functions such as:

- Cleaning
- Clamping the workpiece
- Releasing the workpiece
- Holding down

Quick clamping system 2 min. The chucks are changed in 2 minutes with a precision of 2 µm. Bar passage up to max. ø 65 mm.

2minutes

Collet range for base 32

100 Hainbuch Collet ø42-65 with quick clamping system

140 Chuck ø140 for pull bar.

100 Waterproof version available for all chucks.

32 Collet F

60 Collet EX or ESX

100 Collet Schaublin D

140 Collet Schaublin W

32 Collet Schaublin B

60 Collet pallet: Ottet

100 Collet pallets

140 Vises

32 Chuck for pull bar

60 Pneumatic chuck

100 Chuck, bi-auto centering

140 Hold-down chuck

32 Circumferential chuck

60 Contour hold-down

100 Pallet blank

140 Clamping spindles

32 Clamping in transfer lines

Double clamping (inside-outside)

Plungers for: Outside-clamping / Inside-clamping

Centering of the Ottet collet: Precision centering with 3 balls

External or internal centering

Centering of the Ottet collet: Precision centering with 3 balls

Positioning with grooves.

Positioning with serrations.

8-jaw chuck for pull bar

Jaws with screws from oblique bottom.

Jaws with screws from above.

Whether 2, 3, 4 or 8 jaws, we make them on measure for you

Pneumatic clamping

Clamping range limiter

Clamping range limitation for the master-jaws and the slave-jaws

An AXXEN exclusivity

Workpiece centering: High precision with 3 balls

Swing-out possibilities: 90D = 90° right, 45HB = 45° above/below, 90G = 90° left, 45GD = 45° left/right

Working plate with vacuum or Standard workplate

Clamping system for circumferential and surface machining with swiveling downholder.

Circumferential/downholder chuck

Top-bottom chuck

The workpiece is clamped with swing-out form hold-downs.

Hold-down clamp / Swivel cover

For machining thin parts: Working plate ø 60mm / 60x60mm

For automatic pallet change

Pallets for manual clamping of workpieces.

On request we realize spindles with integrated clamping device.

We develop optimized clamping solutions for transfer lines.

The top-bottom chuck can be converted to a vice, collet or pallet fixture.

Modular top-bottom chuck

Rotational duplicating guide

Spindle adapter

Base

Chuck

Collet pallet

Reduction

Ottet Collet

The installation base: Allows a space-saving installation directly into the spindle.

Spindle adapter

Clamping range limitation

Base

Chuck

Clamping range limiter

Setting gauge: To set the zero point on the machine or presetting station.

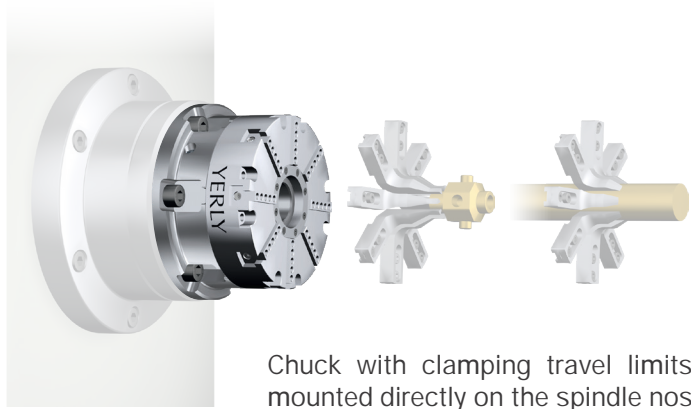
Multistation hold-down chuck: On request with corresponding workpiece holders.

Ottet collet table pallet.

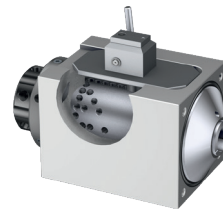
Span in transfer lines.

Hold-down chuck on table.

Customized solutions



Chuck with clamping travel limits mounted directly on the spindle nose.

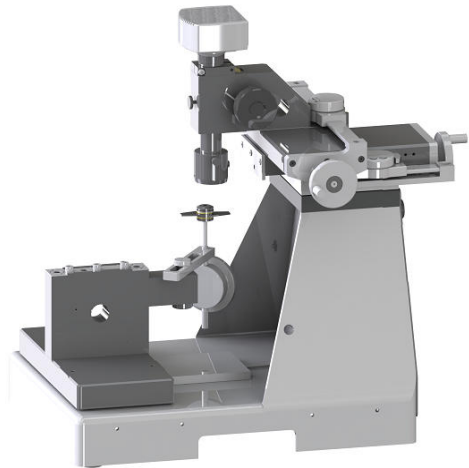


Manual dividing head.

Measuring and presetting device

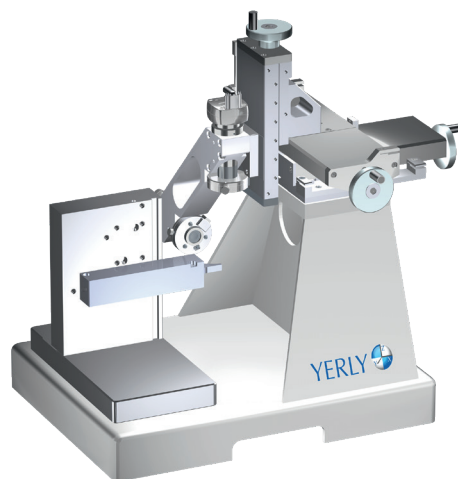


YM 800 presetting device
For mounting all AXXEN bases.



Presetter YM-150
For various tool holders.

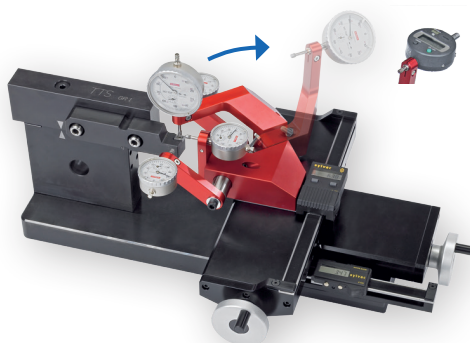
Presetter with camera YM-150 VID
For various tool holders.




 **axxen**
smart clamping systems

Rte de la Croix 27
CH-2822 Courroux

Tel. +41 32 421 11 00
info@axxen.ch
www.axxen.ch



Presetter YM-150PC For
various tool holders.

 System patented

Technical changes are subject to change without notice, April 2026 edition